



— Transition — Gb Major — Harmonically Ambiguous —

**C4** **D3** **A3'** **B2'** **A3''** **B2''**

*pp* *ppp* *f* *rit. molto rall.* *Tempo mod<sup>to</sup>* *Repeated an octave lower* *Modéré* *rit.* *rall.* *pp*

*mp* *expressif* *perdendosi* *énergique* *l'express.*

*ôtez la Sourdine* *mettez la Sourd.*

Ebm Eb<sup>9</sup> Db<sup>9</sup> F#7 E7 C#m-7

Harmonically Ambiguous —

**A Dorian** **C Lydian** **H1**

*Repeated an octave lower* *Pas trop lent (♩ = 60)* *en dehors* *pp* *expressif* *arc* *ap tres expressif* *pizz.* *mf*

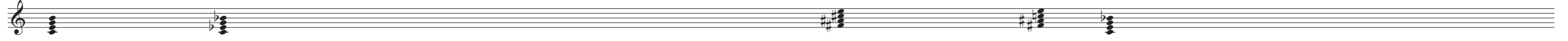
*ôtez la Sourd.* *mettez la Sourd.*

I<sup>7</sup> VI<sup>13</sup> II<sup>7</sup> I<sup>7</sup> II<sup>7</sup>/IV<sup>13</sup> I<sup>7</sup> II<sup>7</sup>/IV<sup>13</sup> I<sup>7</sup> I<sup>7</sup> G<sup>13</sup>

Am<sup>7</sup> D<sup>13</sup>/B<sup>7</sup> G<sup>13</sup>

Harmonically ambiguous Pivot Chord: V of C Major/VII Of A Dorian

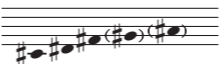
C major/minor



C Lydian



Pentatonic



Pentatonic



H2



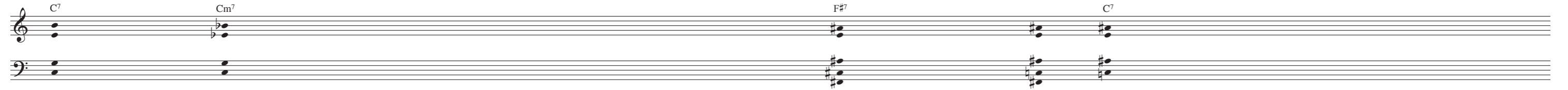
H3'



H3''



C<sup>7</sup> Cm<sup>7</sup> C<sup>7</sup> Cm<sup>7</sup> F<sup>#7</sup> C<sup>7</sup> F<sup>#7</sup> C<sup>7</sup>



E Dorian

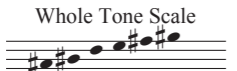


D Major



H4'

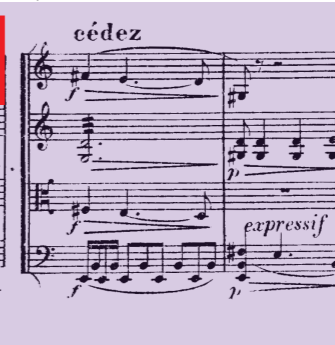
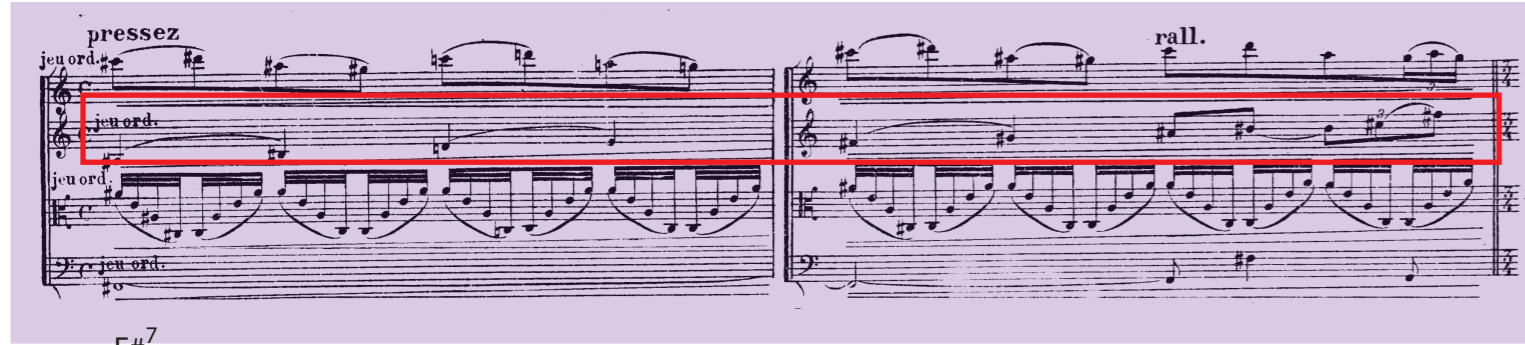
Whole Tone Scale



H4''

H5

A4/D4



F<sup>#7</sup> Em<sup>9</sup> Em<sup>9</sup> E<sup>9</sup>

